

Customer: Date: 9/29/2009  
 Contact: From:  
 Telephone: Company:  
 Cell: Return Tel:  
 Fax: Return Fax:  
 Job:  
 Quote #: 0

**GIVEN DATA****Construction**

Item: DXM2-3  
 Coils Per Bank: 1  
 Tube OD IN: 5/8  
 Style: EJ  
 Fins Per Inch: 11  
 Rows: Optimize  
 Fin Surface: Optimize ABC  
 Fin Height (IN): 37.50  
 Finned Length (IN): 36.00  
 Tubing Mat. (IN): 0.020 Copper  
 Fin Mat. (IN): 0.0075 Aluminum  
 Circuiting: Optimize  
 Face Area (SQ FT): 9.38

**Air Side**

Air Flow (Sft<sup>3</sup>/min) 4,500  
 Altitude ft: .00  
 Ent. Air DB/WB °F: 95.00 / 78.00  
 Lvg. Air DB/WB °F: .00 / .00  
 Total / Sensible MBH: 180.0 / .00  
 Max Air PD "H2O: .00

**Refrigerant Side**

Refrigerant: 410A  
 Super Heat °F: 8.00  
 Saturated Suction Temp °F: 45.00  
 Liquid Temp °F: 110.0

O U T P U T   D A T A		M o s t   E c o n o m i c a l			S p e c i f i e d   C o i l		
		Coil 1	Coil 2	Coil 3	Coil 4	✓ Coil 5	Coil 6
Model Number:						5EJ1103B	
Air Velocity:	(Sft/min)					480.0	
Total Capacity:	MBH					218.2	
Sens. Capacity:	MBH					128.3	
Lvg. Air DB:	°F					68.59	
Lvg. Air WB:	°F					65.93	
Standard APD	"H2O					.35	
Code 18 / 19:						7012/8	
Suction Conn.:	IN					(2) 1.625	
Liquid Conn 1:	IN					(2) 0.625	
Liquid Conn 2:	IN					N/A	
Refr. PD:	lbf/in <sup>2</sup>					.82	
Refr. Velocity:	ft/min					951.9	
Weight:	lbm					122.3	
Notes:						BCJKMPQ	

**Notes:**

B) Rated In Compliance With ARI 410.

C) Coil Not Within Certified ARI Directory.

J) Coil Will Be Supplied With Multiple Distributors.

K) Special Circuiting, Dead Tubes May Be Required, Consult Factory.

M) Coil rating valid for Heatcraft coils only.

P) Refrigerant velocity is less than 1,000.0 ft/min

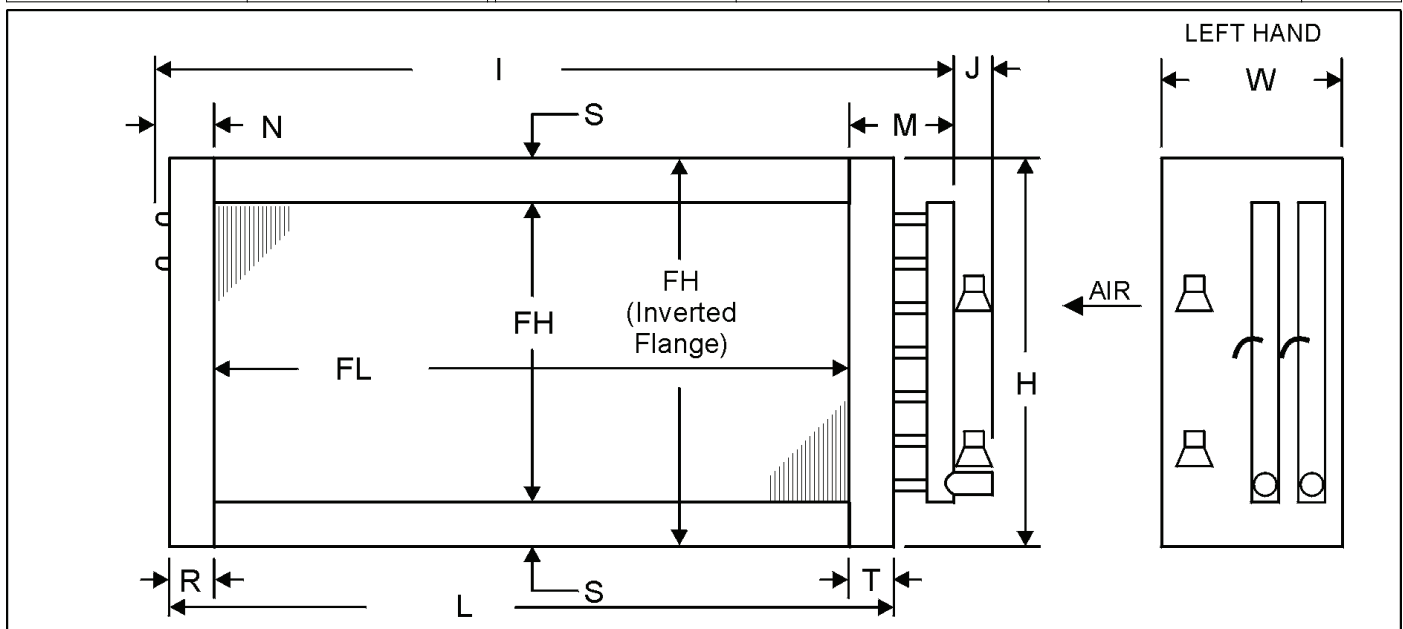
Q) If evaporator is used in a heatpump application, change tubing material to 5/8 Stainless Steel or 5/8 Carbon Steel or select a 3/8 OD coil.

Customer:  
 Contact:  
 Telephone:  
 Cell:  
 Fax:  
 Job:  
 Quote #: 0

Date: 9/29/2009  
 From:  
 Company:  
 Return Tel:  
 Return Fax:

ITEM	QTY	MODEL NUMBER						HAND
		TYPE	FPI	ROWS	FIN	FH (IN)	FL (IN)	
DXM2-3	1	5EJ	11	03	B	37.50	36.00	Left

MATERIALS OF CONSTRUCTION		OPTIONS				
Fin	0.0075 Aluminum	Coating	None		Nitrogen Charge	No
Tube	0.020 Copper	Casing Type	Flanged		Moisture Eliminator	No
Casing	Galvanized Steel	Bypass Kit Size	None		Mounting Holes	No
Conn. Material	Copper	Distributor Location			Label Kit	No
Conn. Type	Sweat	Distributor Tube	0.25			
Conn. Size	1.625/0.875	Nozzle Number	6			
		Number of Circuits	12			



DIMENSIONAL DATA(IN)										
H	I	J	L	M	N	R	S	T	W	SJC
40.50	44.50	6.00	39.00	5.25	3.25	1.50	1.50	1.50	7.50	

**NOTES:**

**GENERAL NOTES:**

1. All dimensions are in inches.
2. Phenolic coated coils require a longer lead-time since they must be re-tested after coating.
3. .375 inch mounting holes will be provided on 6 inch centers from the centerline of the fin height and finned length. Not available when S < 0.75 inches.
4. The suction line should be connected to the lower connection on the entering air side for counterflow operation.